

### Important to know!

**Microinvest Warehouse Pro Light Restaurant** is designed to work in tandem with **Microinvest Warehouse Pro** which provides all back office functions.

When you start up **the restaurant module of Microinvest Warehouse Pro Light** the program automatically checks the connection with the database of **Microinvest Warehouse Pro**. There are six mandatory requirements which must be completed in order to start work with **Microinvest Warehouse Pro Light** in the back office module **Microinvest Warehouse Pro**. Those conditions are checked at start of the restaurant point of sale module and marked on the screen with a green tick. If there is a problem the condition will be marked with red tick. You should access **Microinvest Warehouse Pro** to fix issues with such setup conditions.



**ATTENTION: All of the steps below ought to be done in the main module of Microinvest Warehouse Pro!**

Listed below are the settings required for **Microinvest Warehouse Pro Light Restaurant**.

**Condition 1:** Define passwords for each user (waiter) - Create New Users with unique passwords, at least one.

**Steps:** Go to **Edit => Users => New** enter the name and the password and in field **State** pick up the following option "The user is frequently used" to sort before others. Save the information at the end by pressing **Save** button.

**Condition 2:** Frequently Used Items – Mark all items which will be used in *Microinvest Warehouse Pro Light Restaurant* as “Frequently used” and divide them in groups.

**Steps:** Go to **Edit** => **Items**. Select item and press **Edit**. Then from **State** field pick up “*Frequently used*”. Go to **Groups** tab to create new group or use already existing one. Save the information at the end by pressing **State** button.

**Condition 3:** Define default locations with Code=100 – **This is the billing center of the restaurant module**. If you have large restaurant with few billing centers, you can set up the second center with Code=200, the third to be with Code=300, and so on.

**Steps:** Go to **Edit** => **Locations** => **New** with code 100, write name and from **State** field pick up “The location is frequently used, sort before others”. Save the information.

**Condition 4:** Define the Tables in your restaurant (Locations code range 001-099). All tables within the first billing center of the restaurant (defined with Code=100 in a previous step) **will be set up as new locations** with codes 1,2,3...99. If you want to set up another location within the same restaurant (another floor for instance), you set up a new billing location with a code of 200 and each table handled by this location will be with a code of 101 through 199.

**Steps:** Go to **Edit** => **Locations** => **New** write with codes from 1 to 99 with names. Most frequently the names are Table 1, Table 2... Table99. Then from **State** field pick up “The location is frequently used, sort before others”. Save the information

**Condition 5:** Frequently used partners – you should mark all clients you will work with in the restaurant.

**Steps:** Go to **Edit** => **Partners** => **New**. From General Information write the name of the Partner and from **State** field pick up “Partner is frequently used, sort before others”. Then go to **Additional Information** choose **Type** to be **Client**. Save the information.

**Important note:** Check splitting is a regular function for some restaurants and bars. To be able to use it in *Microinvest Warehouse Pro Light Restaurant*, you need to set up two or three clients in the main back office system (*Microinvest Warehouse Pro*) between which you can split and transfer customer checks and orders.

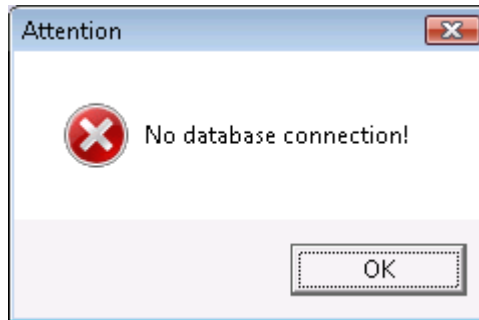
**Condition 6:** VAT included - Enabled

**Steps:** **Settings** => **Special Settings** and pick up “VAT included” to be enabled

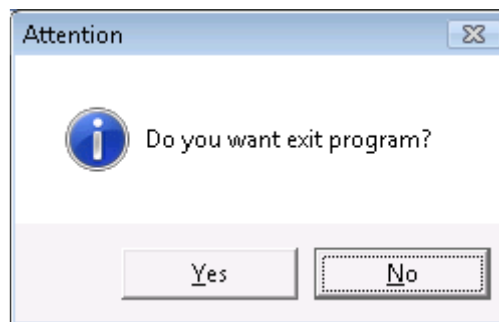
Start *Microinvest Warehouse Pro Light Restaurant* again from the icon on the desktop. Enter user name and password to open the main window.

### Open the database of *Microinvest Warehouse Pro Light Restaurant*

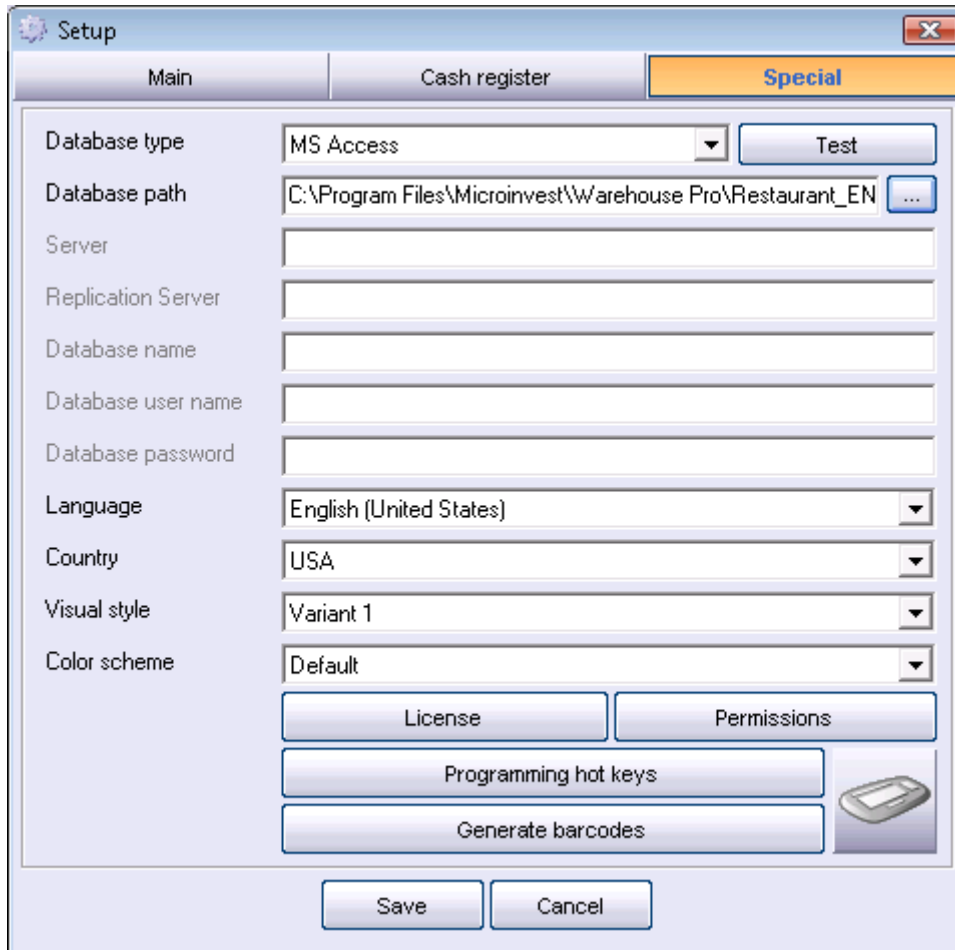
1. Make sure that you already have installed and set up *Microinvest Warehouse Pro* and database.
2. Start up *Microinvest Warehouse Pro Light Restaurant* from the icon on the desktop.
3. Notification “**No database connection**” will appear on your screen. Press **OK** button.



4. Notification “**Do you want to exit the program?**” will appear on your screen. Press “**NO**”. At this point it is important to select **No**, because you do not wish to exit the application. If you click **No**, the application opens the **Settings** window.

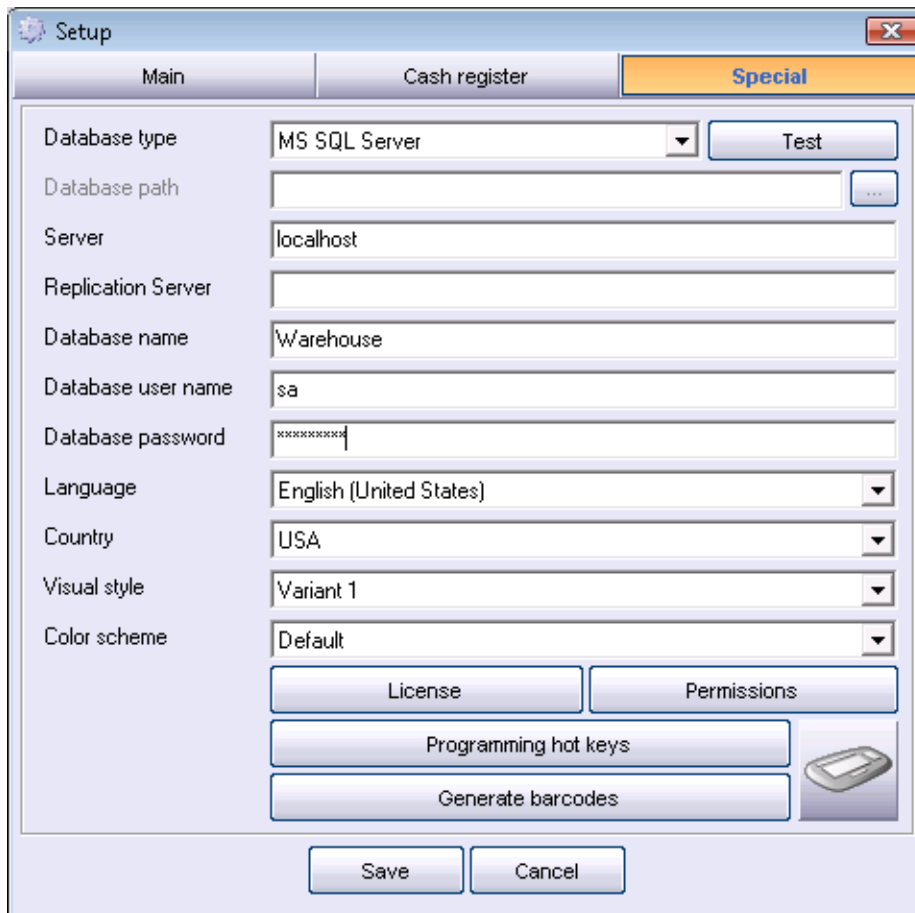


5. Go to **Special** tab and select the database you already set up for your restaurant in **Microinvest Warehouse Pro**.
  - For work with MS Access database:
    - Choose **Database type** – MS Access.
    - Insert the path to the database in the **Database path** field or press the button to browse to the location where the database for your restaurant is located



The screenshot shows the 'Setup' dialog box with the 'Special' tab selected. The 'Database type' is set to 'MS Access'. The 'Database path' is 'C:\Program Files\Microinvest\Warehouse Pro\Restaurant\_EN'. Other fields include 'Server', 'Replication Server', 'Database name', 'Database user name', 'Database password', 'Language' (English (United States)), 'Country' (USA), 'Visual style' (Variant 1), and 'Color scheme' (Default). Buttons for 'License', 'Permissions', 'Programming hot keys', 'Generate barcodes', 'Save', and 'Cancel' are visible.

- For work with SQL Server database:
  - Choose **Database type** - MS SQL Server
  - In the **Server name** field fill in the name or IP address of the computer on which SQL Server is installed.
  - In the **Database name** field fill in the name of the database or click the button to the right to select an existing database (*if all other fields are filled in accurately*);
  - In the **Database user name** field fill in the username for access to the database.
  - In the **Database password** field fill in the password for access to the database.



6. Use the **Language** field to select the language that you want to work with.
7. Use the **Country** field to select the country you will work in. In this case all issued documents will be according to the country legislation.
8. Visual styles – the application has three different visual styles:
  - **Visual style 1** – all items are displayed as a list on the screen. It is oriented towards fast work with the mouse and the keyboard
  - **Visual style 2** - all items will be in a picture form. This is good for touch screen setup where users need large buttons for quick selection.
  - **Visual style 3** – this is a visual editor of tables and is a new advanced system for creation of restaurant models with table position scheme.
8. Save the information